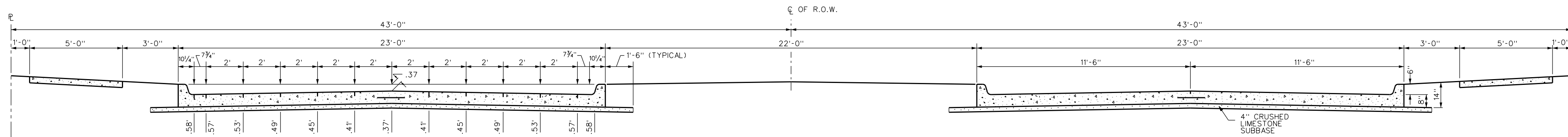
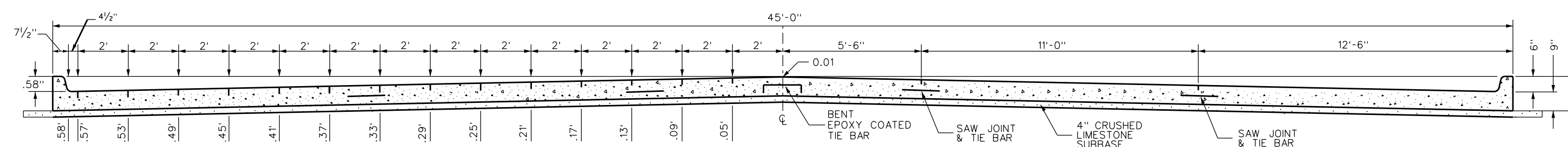


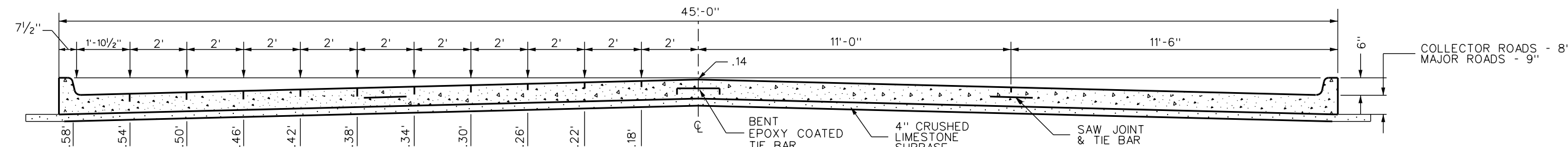
TYPICAL PAVEMENT CROSS-SECTIONS



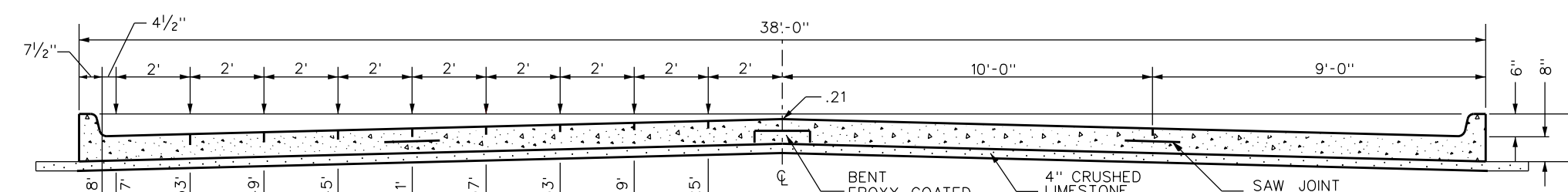
SECTION THRU BOULEVARD PAVEMENT



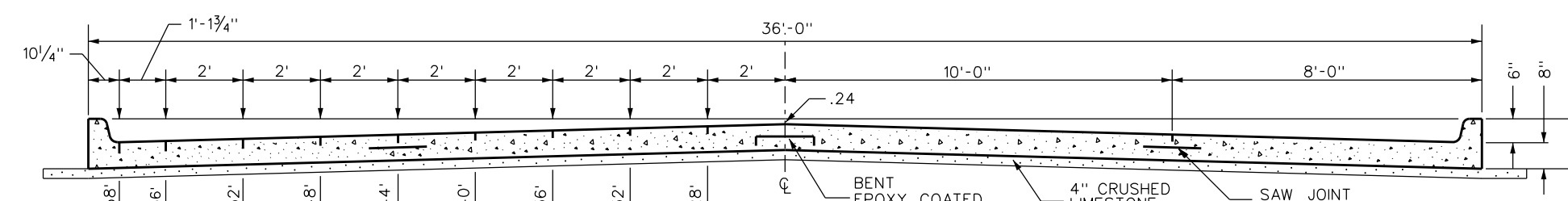
SECTION THRU 58' PAVEMENT



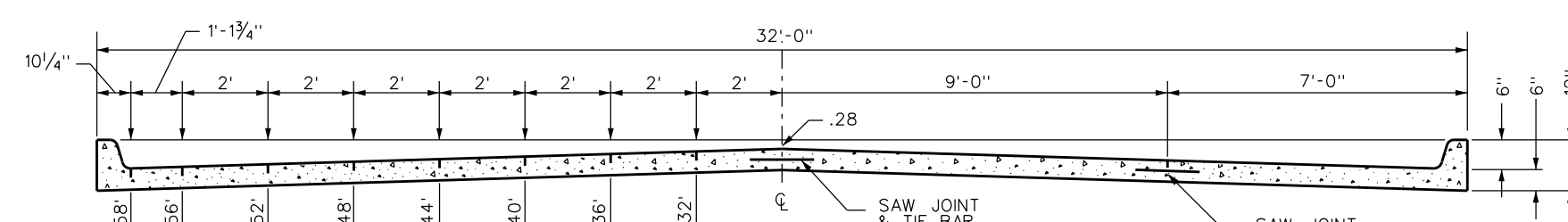
SECTION THRU 45' PAVEMENT



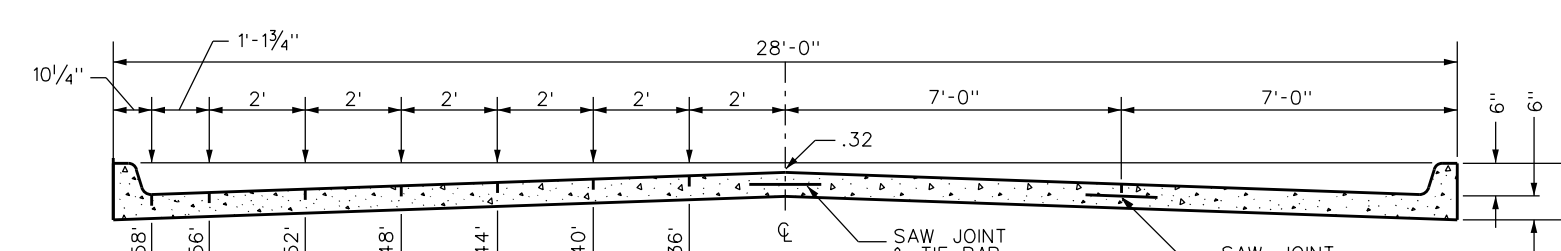
SECTION THRU 38' PAVEMENT



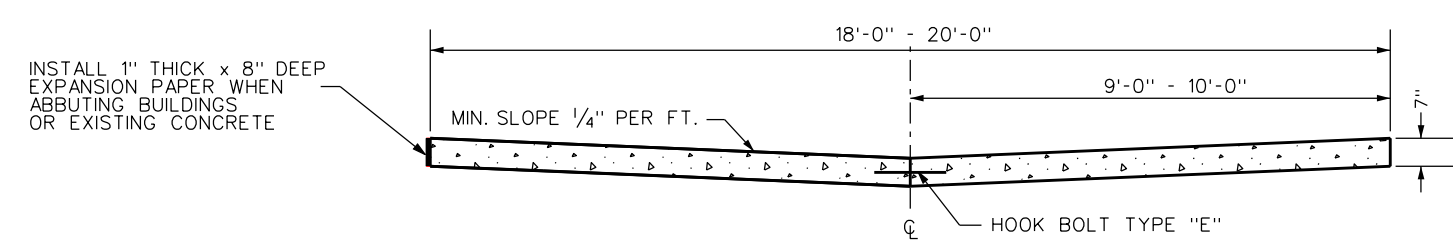
SECTION THRU 36' PAVEMENT



SECTION THRU 32' PAVEMENT

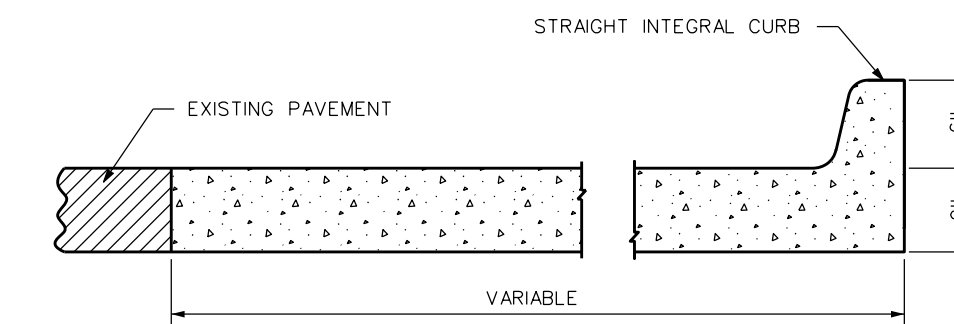


SECTION THRU 28' PAVEMENT

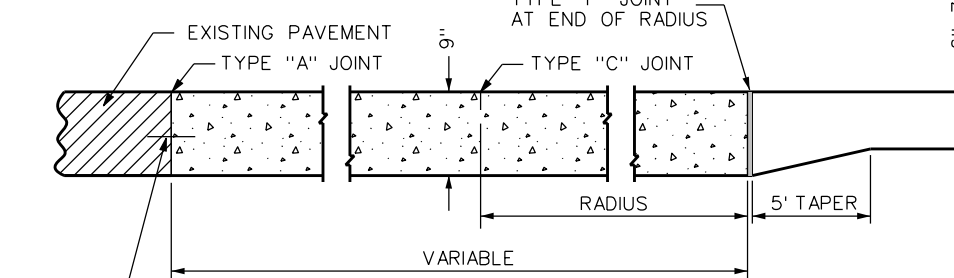


SECTION THRU ALLEY PAVEMENT

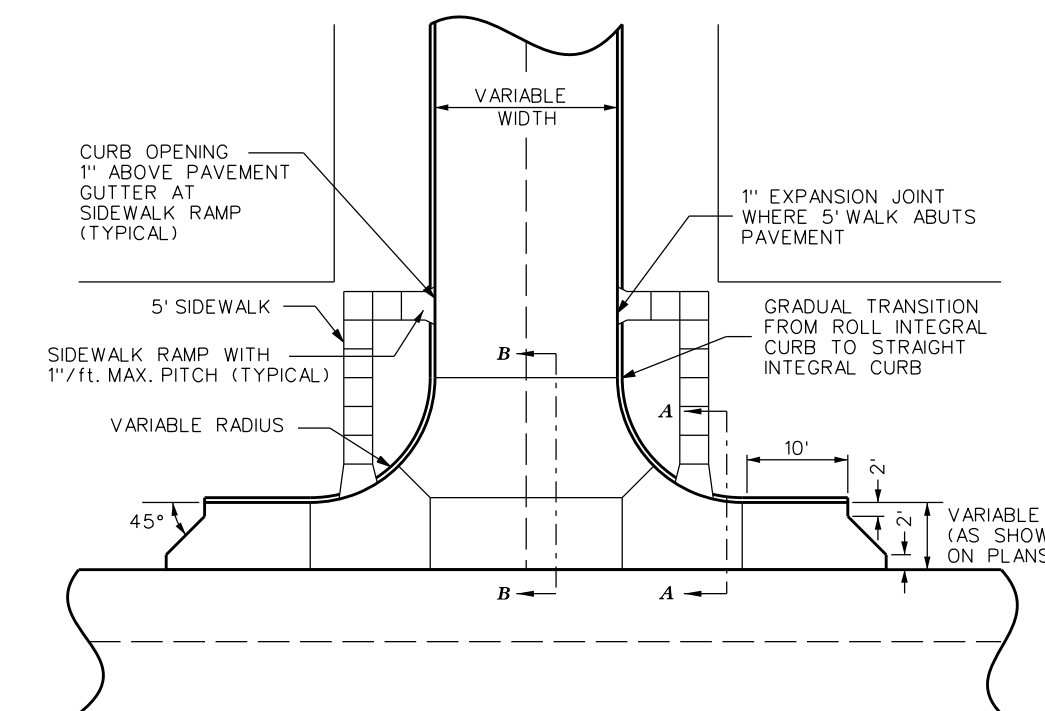
NOTE:
ALL DIMENSIONS & NOTES
ON TYPICAL PAVEMENT
CROSS SECTIONS ARE
SYMMETRICAL ABOUT C



SECTION A-A



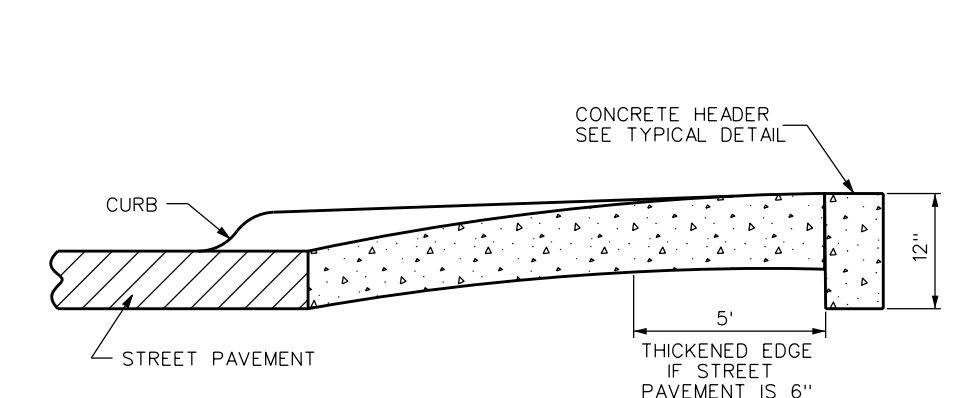
SECTION B-B



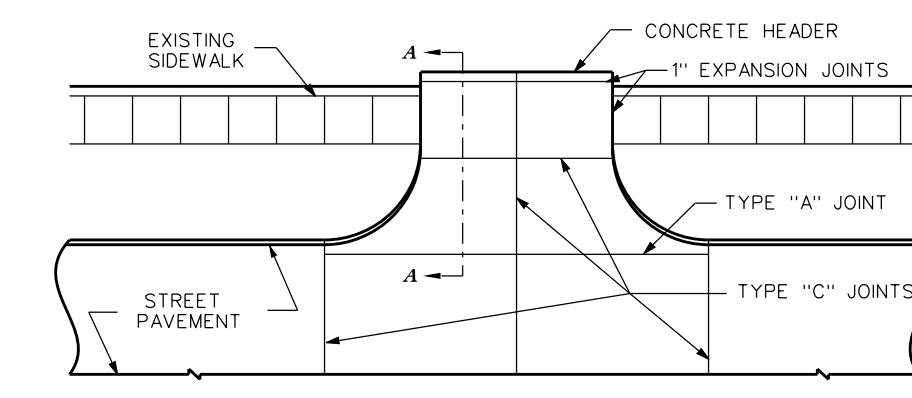
PLAN

INTERSECTION DETAIL WITH FUTURE WIDENING STRIP

NOTE:
1. ALLEY RETURN SHALL BE THE SAME THICKNESS AS THE STREET PAVEMENT AND POURED AT THE SAME TIME AS THE STREET PAVEMENT
2. COMPLETE SQUARES OF EXISTING SIDEWALK SHALL BE REPLACED AS REQUIRED TO ADJUST THE GRADE

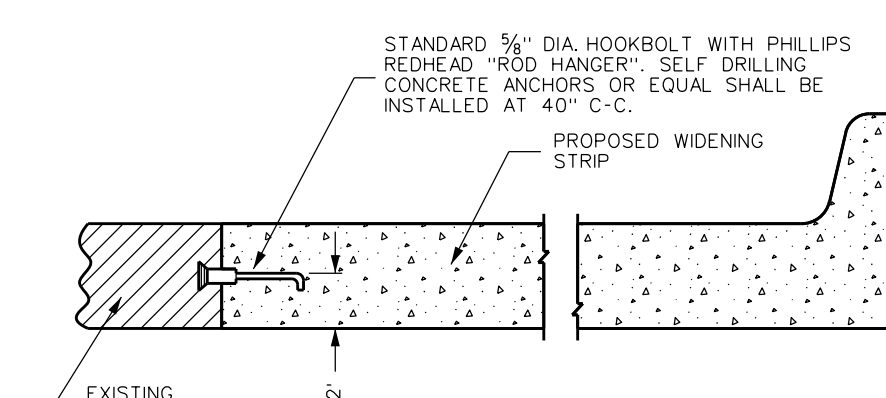


SECTION A-A

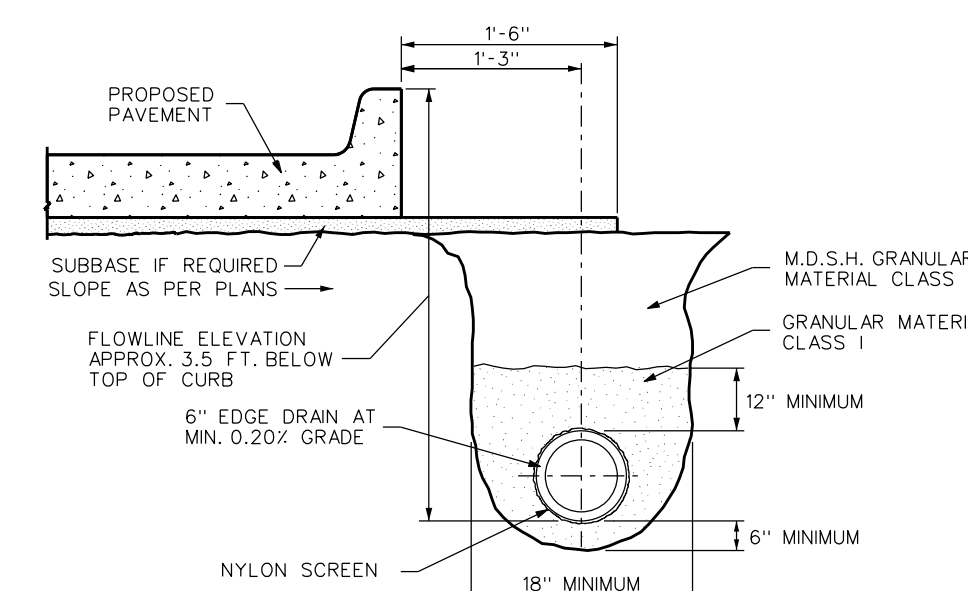


PLAN

ALLEY RETURN DETAIL

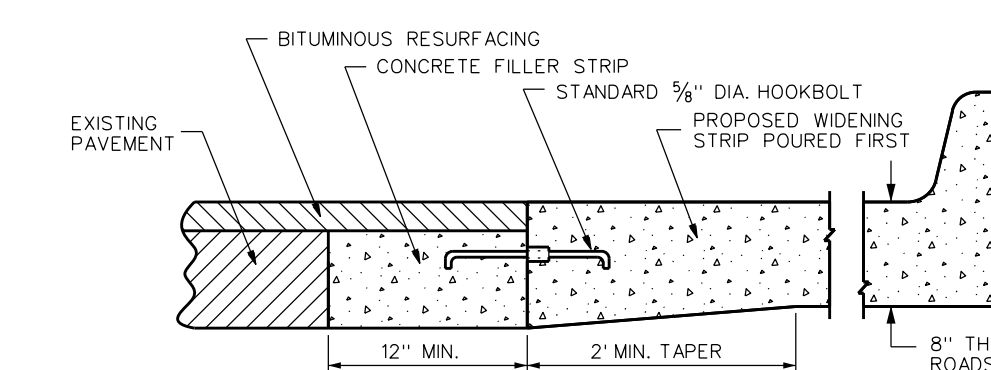


LONGITUDINAL LANE CONSTRUCTION JOINT (FOR WIDENING LANE)



EDGE DRAIN DETAIL

NOTE: HOOKBOLTS SHALL BE INSTALLED AT 40" C-C.



LONGITUDINAL LANE CONSTRUCTION JOINT WITH FILLER STRIP (FOR WIDENING LANE)

REVISIONS	DATE	BY	CHANGE
5/2013		R.M.A.	7" TO 6" CURB HEIGHT
5/2004		D.D.Z.	REV HOOK BOLT/TIE BAR/SUBBASE REQUIREMENTS
7/1998		D.D.Z.	REDRAWN
5/1983		C.R.	

DIVISION OF ENGINEERING
CITY OF WARREN, MICHIGAN

CONCRETE PAVEMENT DETAILS

SCALE: NONE DRAWN BY: D.D.Z.

APPROVED BY: R.T.D. DATE: 7/78

SHEET 1 OF 1 SHEETS